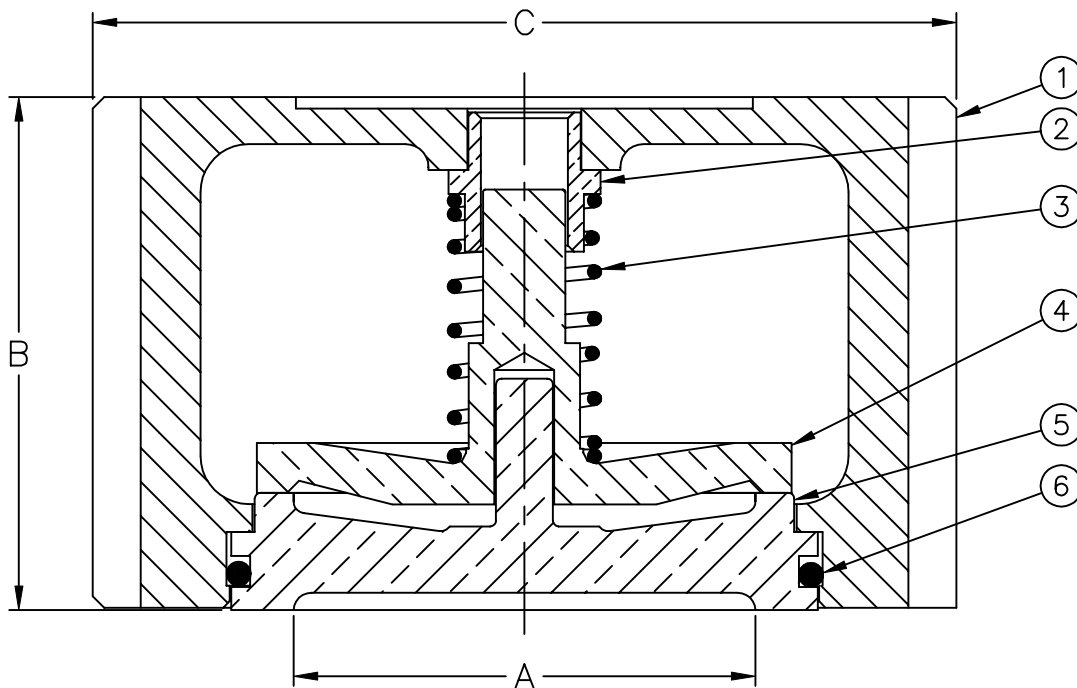


**WAFER STYLE
SILENT CHECK VALVE
2" thru 6"
MODEL 888**



PAT. PENDING

* OPTIONAL RESILIENT SEAT (NITRILE) AVAILABLE, ADD "R" TO THE PART NUMBER.
FOR REFERENCE USE ONLY, SPECIFICATIONS SUBJECT TO CHANGE WITHOUT NOTICE.

WEIGHTS & DIMENSIONS						BOLT SELECTION			
SIZE	PART #	A ϕ (in)	B (in)	C ϕ (in)	WGT.(#)	125#	250#	125#	250#
2	2434	2 13/32	2 43/64	4 1/2	5	4	8	5/8 x 5 1/4	5/8 x 5 1/2
2 1/2	2432	2 9/16	2 7/8	5	7	4	8	5/8 x 5 1/4	3/4 x 6 1/2
3	2435	3 1/4	3 13/64	5 3/4	11	4	8	5/8 x 6 1/4	3/4 x 7
4	2436	4 3/8	4 1/16	7 3/16	18	8	8	5/8 x 7	3/4 x 8
5	2433	5 1/4	4 3/4	8 3/8	25	8	8	3/4 x 7 3/4	3/4 x 9
6	2437	5 29/32	5 5/8	9 3/4	36	8	12	3/4 x 8 3/4	3/4 x 10

ITEM	QTY.	DESCRIPTION	MATERIAL	ASTM #
1	1	VALVE BODY (EPOXY COATED)	CAST IRON	A126, CLASS B
2	1	BUSHING	BRONZE	660
3	1	SPRING	STAINLESS STEEL	302
4	1	POPPET	BRONZE	C83600
5	1	O-RING	BUNA-N	---
6	1	*SEAT RING	BRONZE	C83600

Cv FACTOR

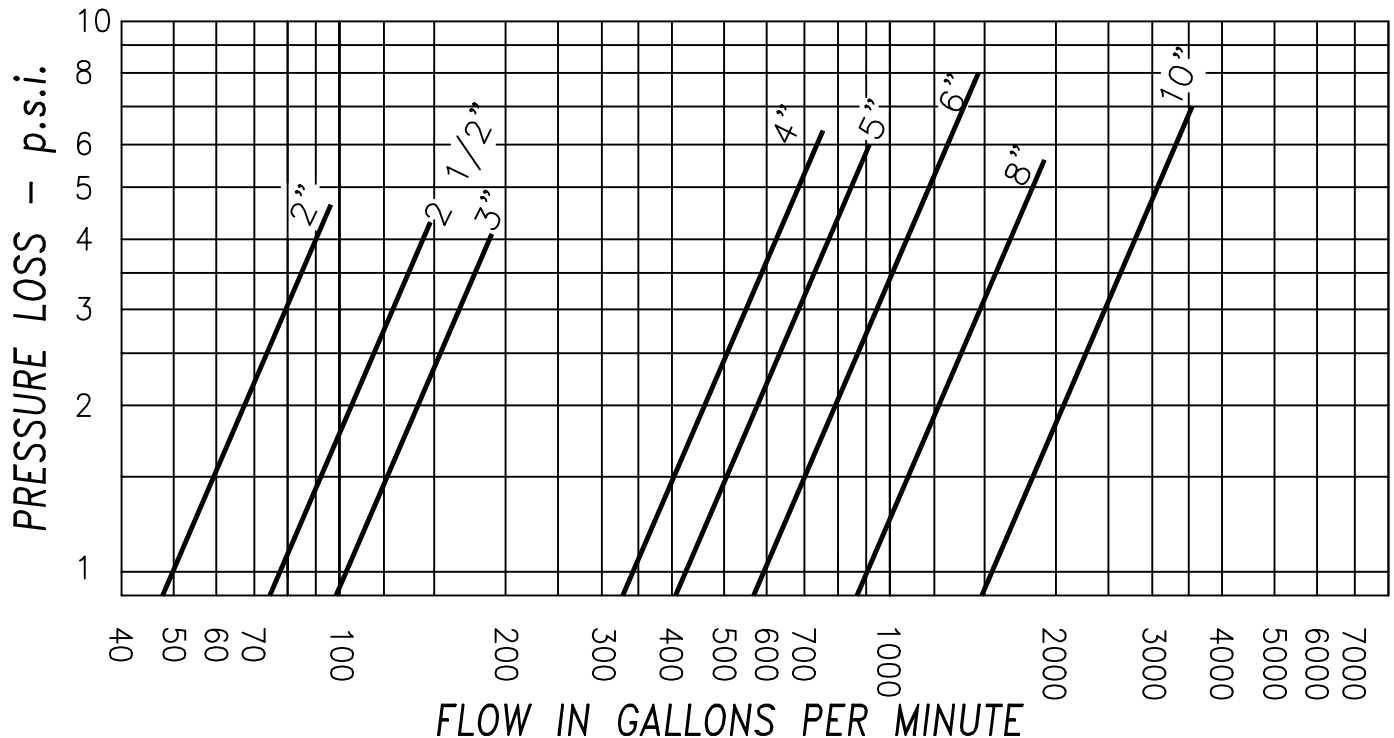
U.S. SYSTEM: Cv = U.S. gal/min @ 1psi with 60°F water.
 METRIC SYSTEM: Cv = liters/sec @ 1 kPa with 15°C water.

**MODEL 888
 HEAD LOSS
 WAFER CHECK VALVE**

VALVE SIZE	Inches	2	2 1/2	3	4	5	6	8	10
	mm	50	65	80	100	125	150	200	250
Cv FACTOR	Gal/Min	50	77	110	340	430	550	900	1600
	Litr/Sec	1.2	1.8	2.6	8.2	10.3	13.2	21.6	38.4
EQUIVALENT LENGTH OF PIPE	Feet	50	54	81	37	74	117	182	191
	Meters	15.2	16.5	24.7	11.3	22.5	35.6	55.4	58.2

EQUIVALENT LENGTH OF PIPE

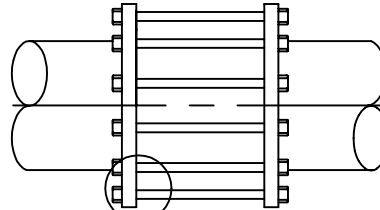
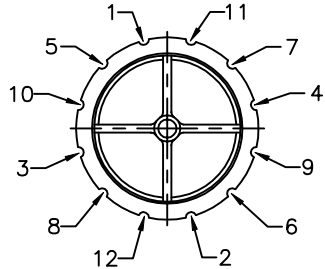
EQUIVALENT LENGTHS OF PIPE ARE BASED ON DATA CONTAINED IN HYDRAULICS INSTITUTE PIPE FRICTION MANUAL. IN GENERAL, THIS DATA IS FOR NEW, CLEAN WROUGHT IRON OR STEEL, SCHEDULE 40 PIPE WITH NO ALLOWANCE MADE FOR AGE, DIFFERENCES IN DIAMETER OR ANY ABNORMAL CONDITION OF THE INTERIOR SURFACE. FOR FURTHER DETAILS, REFER TO ABOVE MANUAL.



WARNING NOTICE

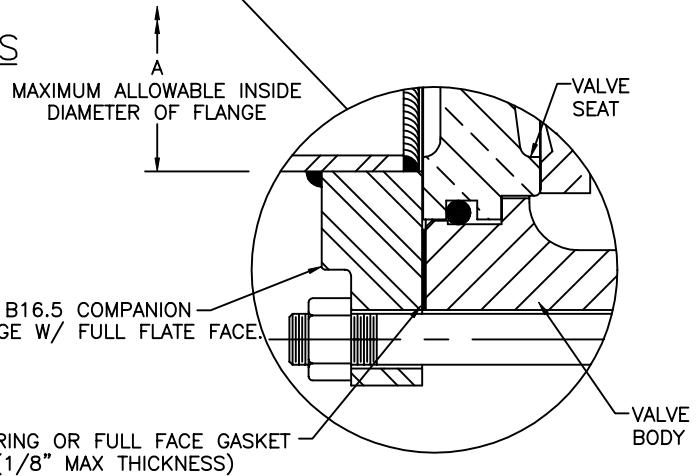
WAFER STYLE SILENT CHECK VALVE MODEL 888/888R

1. Damage to the valve and/or internal leakage can result if other than standard inside diameters conforming to ANSI B16.5 or AWWA C207-94 are utilized. Mortar lined pipe, with expanded diameters that compensate for the mortar lining, may require a backup ring flange.
2. Proper centering of ring gasket is important to prevent internal valve leakage.
3. The valve & adjacent piping must be supported & aligned to prevent stress from being transferred to the valve's flanges. The torquing of the flange bolts should then be done in several graduate steps, using the number sequence shown below. The even loading of the flange bolts will eliminate concentrated stresses which could fracture the valve's flanges.
4. If used on the suction side of the system or for low pressure applications model 888R with Nitrile (Buna-N) seal is required.



INSTALLATION REQUIREMENTS

RECOMMENDED FOR VERTICAL OR
HORIZONTAL POSITIONS ONLY



IMPORTANT

NOTE NO. 1 The matching companion flange I.D. must overlap the valve seat. This is required for proper seat retention.

NOTE NO. 2 The flange gasket must be properly centered and of the size indicated. This is required to achieve a seal between the seat O.D. and the body I.D. interface area.

MAXIMUM ALLOWABLE INSIDE DIAMETER OF FLANGE (SEE NOTE NO. 1)			
SIZE	A	SIZE	A
2.5	2.94	14	14.19
3	3.57	16	16.19
4	4.57	18	18.19
5	5.66	20	20.19
6	6.72	24	24.19
8	8.72	30	30.25
10	10.88	36	36.25
12	12.88	42	42.25

RING GASKET DIMENSIONS (SEE NOTE NO. 2)							
VALVE SIZE	GASKET I.D.	GASKET O.D.		VALVE SIZE	GASKET I.D.	GASKET O.D.	
		125LB	250LB			125LB	250LB
2.5	2.875	4.875	5.125	14	14.00	17.75	19.125
3	3.500	5.375	5.875	16	16.00	20.25	21.25
4	4.500	6.875	7.125	18	18.00	21.625	23.50
5	5.562	7.750	8.500	20	20.00	23.875	25.75
6	6.625	8.750	9.875	24	24.00	28.25	30.50
8	8.625	11.00	12.125	30	30.00	34.75	37.50
10	10.75	13.375	14.25	36	36.00	41.25	44.00
12	12.75	16.125	16.625	42	42.00	48.00	50.75

FOR REFERENCE USE ONLY, SPECIFICATIONS SUBJECT TO CHANGE WITHOUT NOTICE.